

## Visiting Hours

### Visite mesi Aprile - Ottobre:

lunedì 9.00-12.00  
giovedì 15.00-18.00  
sabato 15.00-18.00 (Maggio-Settembre)

### Visiting hours from April to October:

Mondays 9:00-12:00  
Thursdays 15:00-18:00  
Saturdays 15:00-18:00 (May-September)

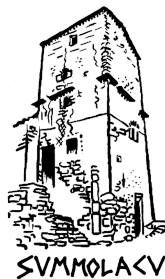
### Besuchungen von April bis Oktober:

Montags 9:00-12:00  
Donnerstags 15:00-18:00  
Samstags 15.00-18.00 (Mai-September)

### Periodo rimanente / orari diversi:

Other months / different visiting hours:  
In den anderen Monaten / verschiedene  
Öffnungszeiten:

329 1475838  
339 2518209  
338 2927327



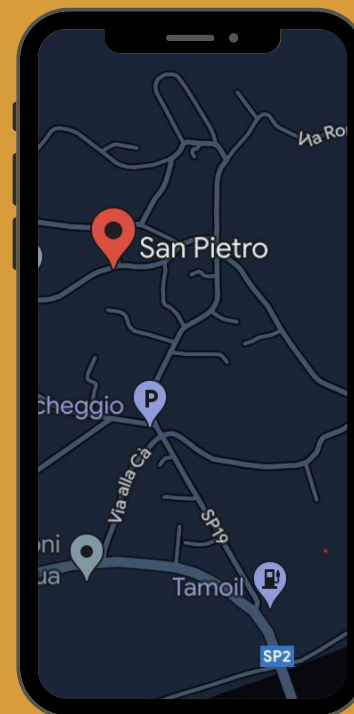
## How to Find Us

We are in **Samolaco**,  
village of **San Pietro**  
in via Culumbée

9 km from Chiavenna

22 km from Colico

Free Parking



## Contact Us

 [acult.samolaco@gmail.com](mailto:acult.samolaco@gmail.com)

 [samolacocultura.it](http://samolacocultura.it)

## In collaboration



Comune di Samolaco



Comunità Montana



# Ethnographic Museum of Samolaco

## Culumbée

Renovated in 2008

In collaboration with the Samolaco local council,  
with the contribution of Emanuele Barelli





## **Culumbée** *between history and legend*

Although there is a lack of bibliographical sources regarding the construction and the transformations the building underwent through the ages, based on structural analysis the tower appears to have medieval origins.

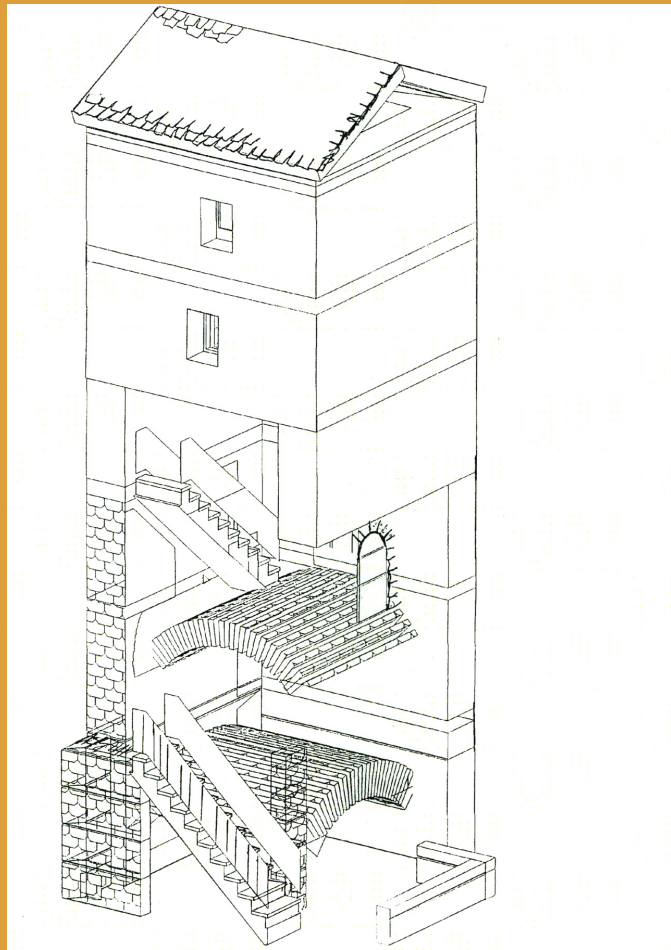
The tower has a square floor plan with each side measuring 5 metres and its 5 floors reach a height of 15 metres. It might have been a garrison tower, as the ancient via Francisca towards Lake Como passed nearby, or a signal tower, connected with the nearby Signame tower uphill.

Tradition has it that the village of S.Pietro, previously Selvaplana, had the honour of hosting Frederik Barbarossa in this tower in the 12th century. It appears that over the centuries the tower was shortened and transformed into a dwelling.

## **The Restoration**

Between 2007 and 2008, the Culumbée underwent a restoration that ensured stability of the structure, previously compromised. The intervention restored the previously boarded windows and strengthened the wooden upper floors, allowing entry for visitors.

## **The Structure**



*Reimagination of ancient "Culumbée",  
arch. Stefano Succetti.*

## **Becoming a Museum**

After the restoration, the Cultural Association of Samolaco curated the creation of a photographic Museum inside the tower. Through the years, the exhibitions have been enriched with everyday life object and tools from the 19th and 20th centuries donated by the local population.

### **Fourth Floor**

*Contemporary images:*

Panoramic views  
Villages  
Old hamlets on the hillside  
Mountain pastures  
Local Architecture

### **Third Floor**

Clothing  
Work and Tools  
The Horse

### **Second Floor**

Big Families  
Coscritti-Military Service  
Social life, school, religion  
Life on the "alpeggi"

### **First Floor**

Culumbée between history and legend  
Samolaco in old postcards  
Old images and postcards

### **Ground Floor**

Reconstruction of a cellar

